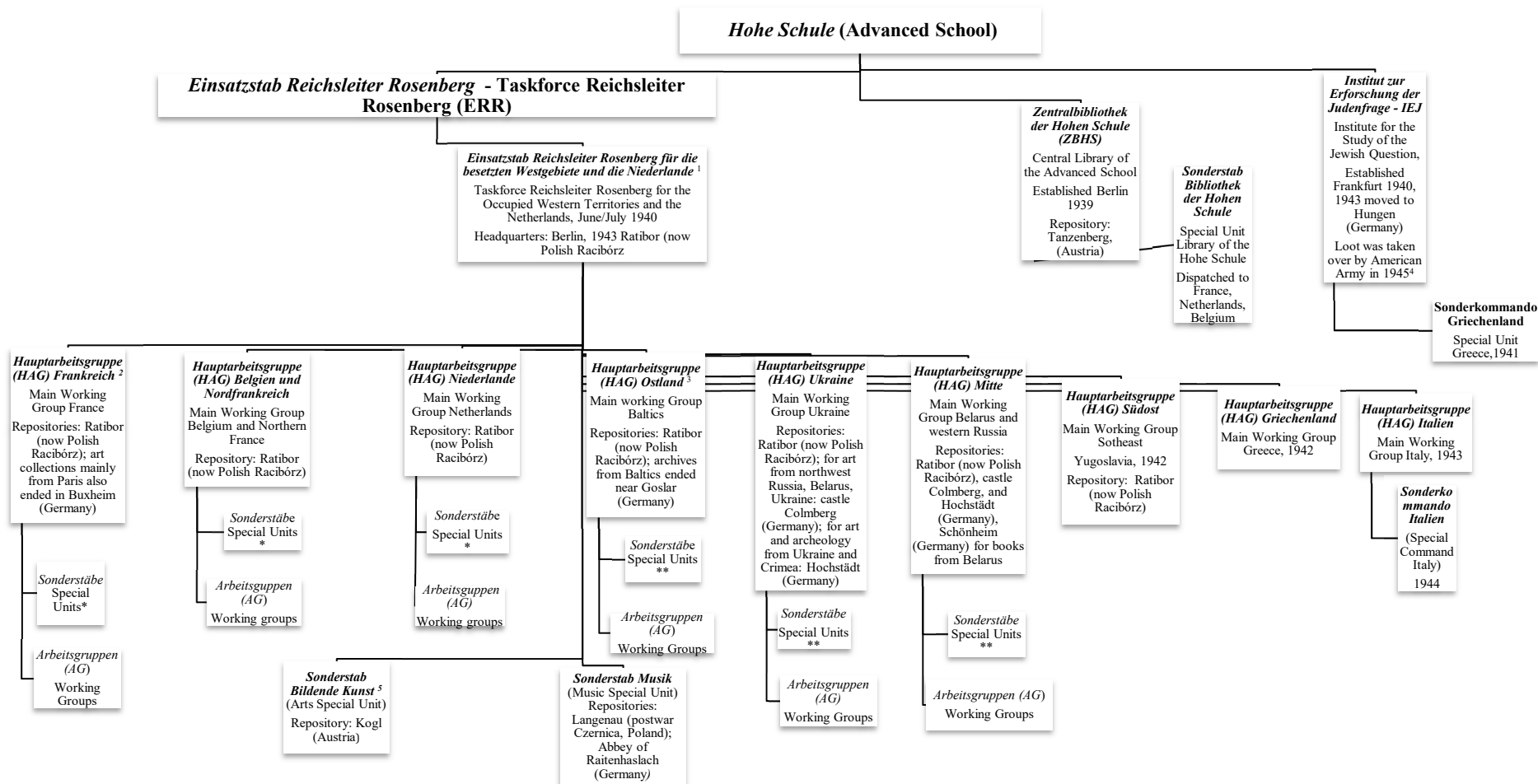


APPENDICES TO PART 1

A. ORGANIZATIONAL CHARTS (ERR, RSHA)

Chart (I) Einsatzstab Reichsleiter Rosenberg - Organizational Chart



* Special units for visual arts, music, prehistory, libraries, theater, folklore, science, genealogy, etc.

** Special units for library, archives, research, prehistory, etc.

¹ In 1941, alongside operation Barbarossa and the invasion of the Soviet lands, the ERR dropped the “western” designation and used the name “for the Occupied Territories” (für die besetzten Gebiete).

² From 1943 onwards, the ERR was also operational in Marseille and Nice where it established special commandos (Sonderkommando).

³ Since 1941, Rosenberg was also the head of the Reichsministerium für die besetzten Ostgebiete (or RMbO) which oversaw the Reich Commissariat Ostland (Reichskommissariat Ostland, RKO) and the Reich Commissariat Ukraine (Reichskommissariat Ukraine, RKU). The ERR worked along these geographic lines, following the civil administration of the RMbO.

⁴ The ERR looting sprees, first in the west (France, Belgium and the Netherlands) and later in Eastern Europe, caused the Institute’s library to claim that it held the world’s largest specialized library on Judaica. By the end of the war, the library held about two million books. Some books fell victim to a bomb that hit the building, while the remainder was taken over by the Americans and later distributed by the Jewish Cultural Reconstruction (JCR).

⁵ In France the ERR art-looting program was run by the Sonderstab Bildende Kunst.

Chart (II) Alfred Rosenberg – Political Career

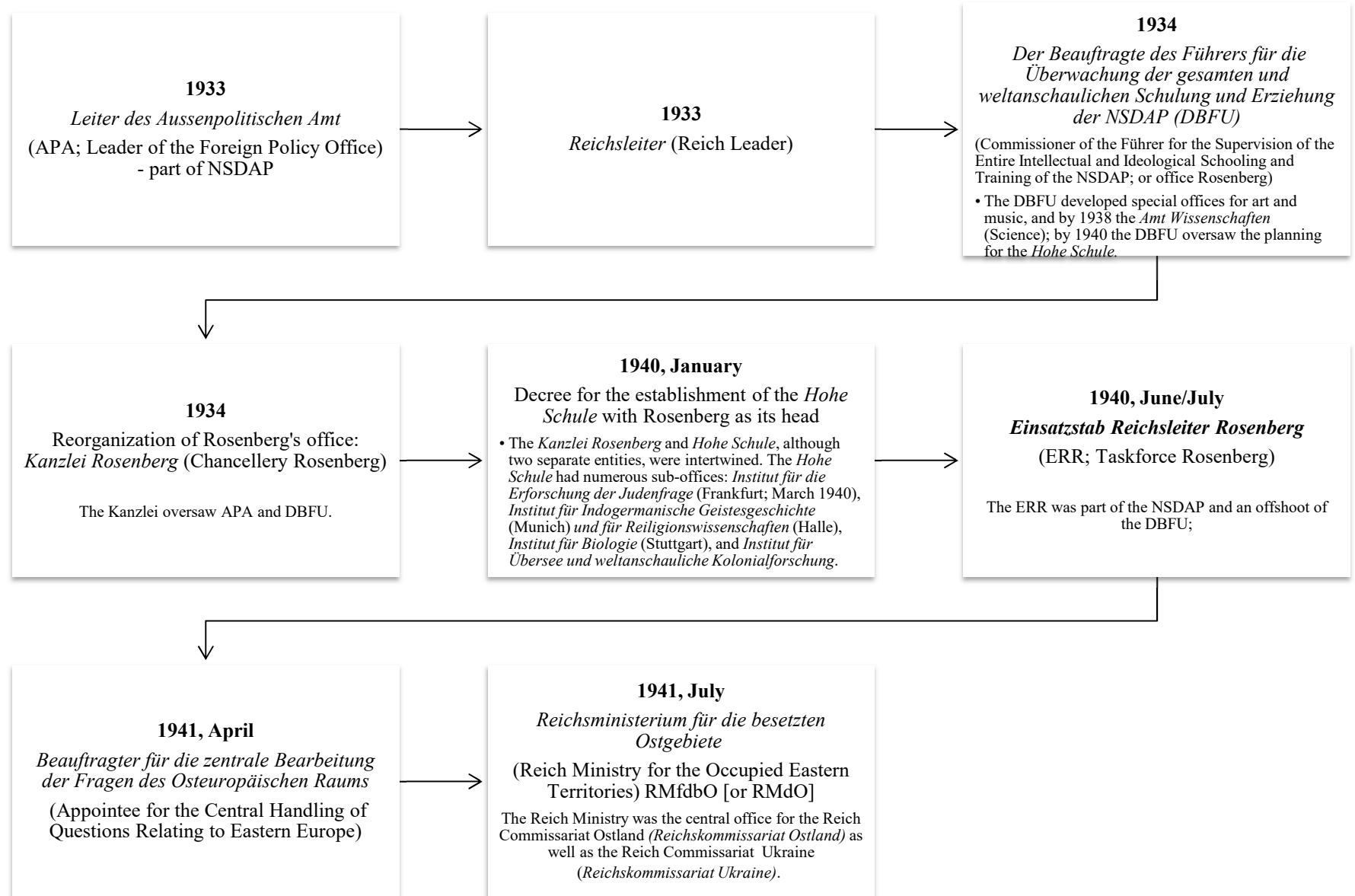


Chart (III) Reichsministerium für die besetzten Ostgebiete & Looting

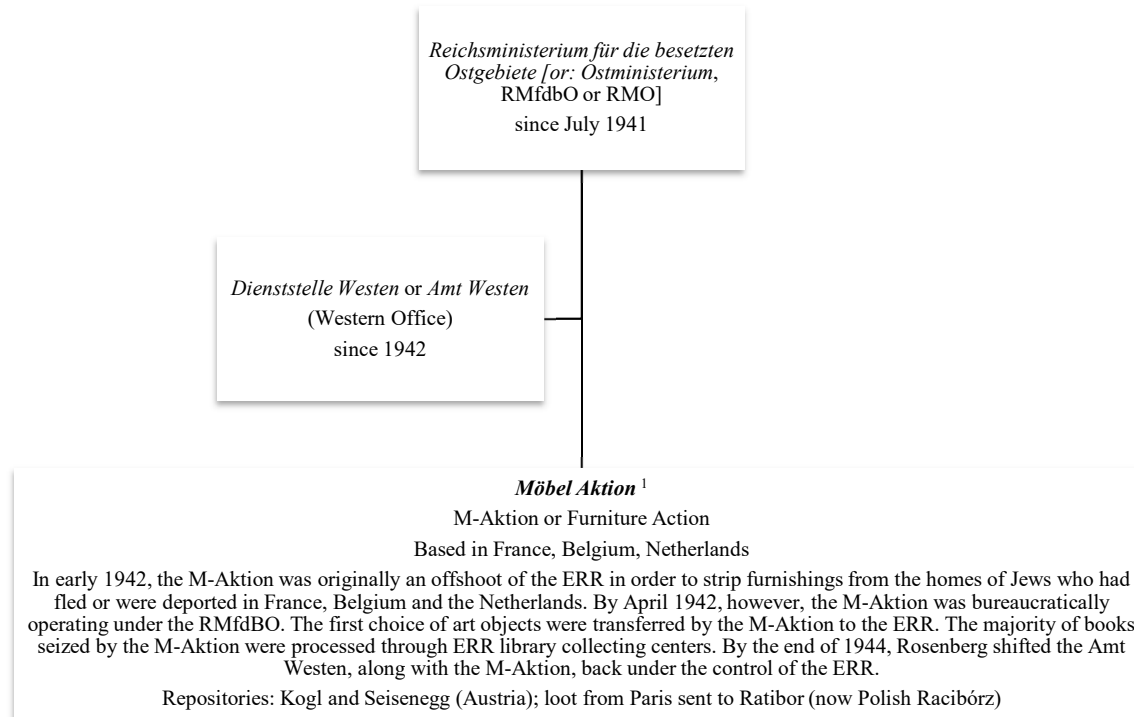


Chart (I) – Reichssicherheitshauptamt (RSHA): Organizational Relationships

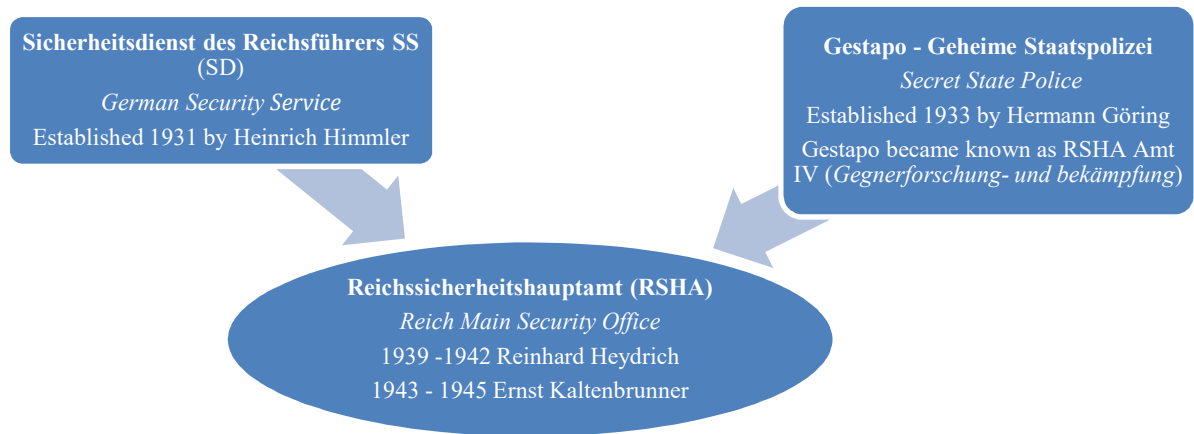


Chart (II) – Reichssicherheitshauptamt (RSHA): Organizational Structure

